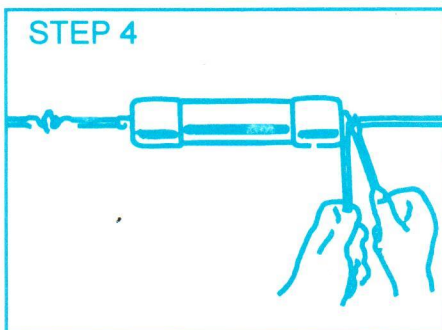
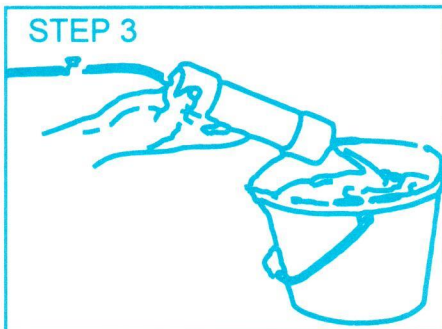
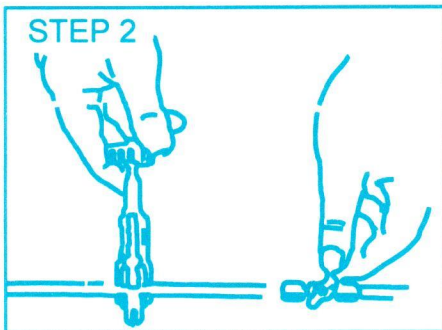
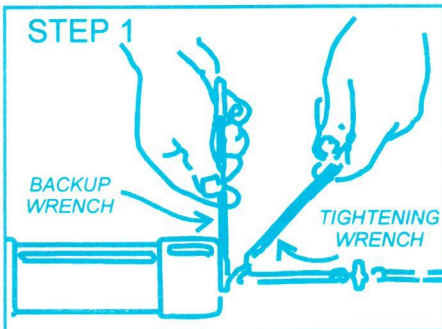




# In-Line Filters Owner's Guide

*Installing an In-Line Filter is simple when you realize that what you are doing is replacing a piece of your incoming water line with the CuZn™ In-Line Filter and when you read and follow these instructions.*



- 1) Shut off water supply. Cut water line's tubing with tubing cutter. Water line may be brass or plastic tube.
- 2) **Brass tube with brass or chrome fittings:**
  - a) Slide nut onto inlet water line.
  - b) Slide brass compression ring onto tube.
  - c) Insert tube into inlet end of filter and tighten nut using a backup wrench (so that fitting does not turn into filter).
  - d) Go to Step 3.

#### **Plastic tube with brass or chrome fittings:**

- a) Slide nut onto inlet water line.
- b) Slide brass compression ring onto tube.
- c) Slide brass insert into end of tube.
- d) Insert tube into inlet end of filter and tighten nut using a backup wrench (so that fitting does not turn into filter).
- e) Go to Step 3.

#### **Brass tube with plastic fittings:**

- a) Slide nut onto inlet water line.
- b) Slide plastic compression ring onto tube.
- c) Insert tube into inlet end of filter and tighten nut using a backup wrench (so fitting does not turn into filter).  
**CAUTION: DO NOT OVERTIGHTEN.**
- d) Go to Step 3.

#### **Plastic tube with plastic fittings:**

- a) Slide nut onto inlet water line.
- b) Slide plastic compression ring (tapered end towards filter) onto tube.
- c) Slide brass insert into end of tube.
- d) Insert tube into inlet end of filter and tighten nut using a backup wrench (so that fitting does not turn into filter).  
**CAUTION: DO NOT OVERTIGHTEN.**
- e) Go to Step 3.

- 3) Place the outlet of the filter into an empty bucket and slowly turn on the water. Allow to flush for 5 to 10 minutes until water is clear. This initial flushing washes the dust off the carbon. If the filter is not flushed sufficiently, carbon particles (which pose no danger) may be present in the water for the first couple of days.
- 4) Connect outlet water line using appropriate steps as described in Step 2 instructions. Turn on water, check for leaks, and retighten if necessary. Record installation date.

#### **IMPORTANT:**

- Do not allow filter to freeze.
- Maximum operating pressure is 125 PSI. If pressure is anticipated to exceed this, use pressure reducing valves.

**NOTE:** Replace your System when chlorine from the influent water breaks through the filtered water.

CuZn™ In-Line Systems carry a one-year, pro-rated warranty, provided the systems have been properly installed and maintained and have not been modified or subjected to freezing, water pressures greater than 125 psi, overtightening, abuse, or peril.